

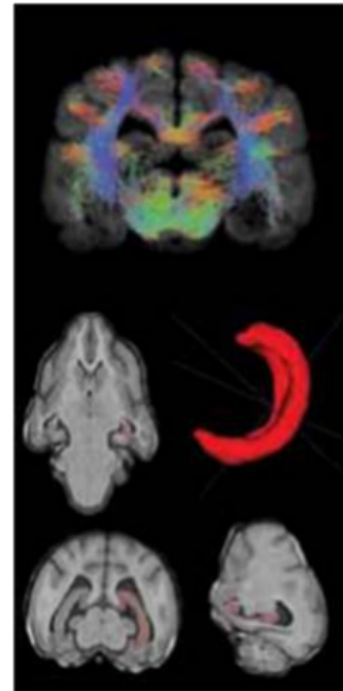
Melbourne Veterinary School - Diagnostic Imaging U-Vet Werribee Animal Hospital

The University of Melbourne led consortium places emphasis on being engaged with the scientific community to enable appropriate usage of biomedical imaging technologies. It aims to promote collaboration between human preclinical, human clinical and large animal researchers with the common goal of improving health outcomes using ONEHEALTH as the research approach.



KEY INSTRUMENTATION

- 3T MRI (Large Animal)
- CT- 16 Slice (Large Animal)
- Fluoroscopy C-Arm (Large Animal)
- Ultrasound (Small / Large Animal)
- X-Ray (Large Animal)
- Nuclear Medicine - Gamma Camera (Large Animal)
- DEXA (Mobile) (Large Animal)
- Confocal Flexible Endomicroscope
- Confocal Rigid Endomicroscope



Access to Neuroimaging Facilities

The consortium is envisaged to provide open accessible world-class facilities for basis imaging research, allowing Australia to remain at the forefront in imaging related science. We offer the use of all our facilities at very competitive rates.

The Melbourne Veterinary School's Diagnostic Imaging service provides imaging services both for critical case management and for contract or collaborative research imaging in all non-human species.

Contact Details

Dr Marjorie Milne
Werribee Node Director
E: mmil@unimelb.edu.au
T: +61 3 9731 2360



MONASH University



Olivia
Newton-John
Cancer Research Institute



A Victorian Science Agenda Strategic Project

