

Swinburne Neuroimaging (SNI) Facility

As the only single-site human imaging facility in Australia offering MRI and MEG, the Swinburne Neuroimaging (SNI) Facility is uniquely placed to support research probing the rapid dynamics of human brain function that underpins behavior, cognitive development, and mental health across the lifespan. The facilities and expertise are available to all Australian researchers, and can cater for academia, the health sector and industry, under National Imaging Facility (NIF) guidelines.



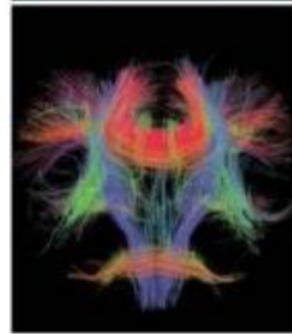
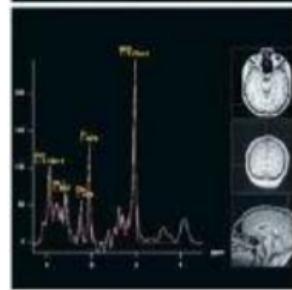
KEY INSTRUMENTATION

Siemens PRISMA 3 Tesla Human MRI Scanner
Equipped with EEG, eye tracking, TMS, and audio, visual, and tactile delivery systems

Elektra Magnetoencephalography (MEG) System
Equipped with EEG, eye tracking, TMS, and audio, visual, and tactile delivery systems

RESEARCH FACILITIES

Electroencephalography (EEG) Laboratories
Transcranial Magnetic Stimulation (TMS) Laboratories
Clinical and neurocognitive interview rooms
Computing facilities for image analysis



Access to Neuroimaging Facilities

SNI encourages the use of all our facilities from all interested parties. We offer the use of our facilities at very competitive rates. Our expert Neuroimaging Committee can also offer a range of support and analysis packages. This could include, but is not exclusive to, assistance with design of equipment, equipment setup, analysis of data, and write up of projects.

There are also possibilities for full scientific collaboration with the Centre for Mental Health (CMH) researchers at Swinburne.

For more information visit our website or email neuroimaging@swin.edu.au

Contact Details

Professor Tom Johnstone
Director

E: tjohnstone@swin.edu.au

Enquiries for Facility Use

Dr Rachel Oliver (Batty)
Operations Manager

E: neuroimaging@swin.edu.au

P: + 61 3 9214 8006

Click [here](#) to visit our website



MONASH University



Olivia
Newton-John
Cancer Research Institute



A Victorian Science Agenda Strategic Project

