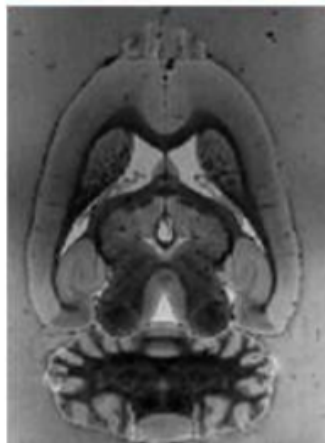
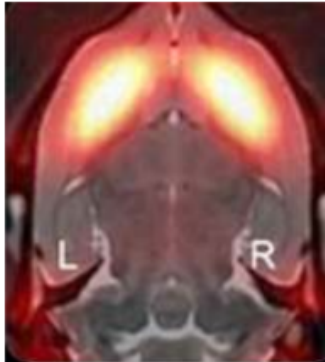


Alfred Research Alliance – Monash Biomedical Imaging (ARA-MBI) Facility

Alfred-Research Alliance – Monash Biomedical Imaging (ARA-MBI) is a state-of-the-art, purpose-built preclinical imaging facility opened in 2018 for use by researchers at the Alfred precinct. It is managed by Alliance partners Monash University and the Baker Heart and Diabetes Institute. Located within the Alfred Hospital in Prahran, ARA-MBI offers unique opportunities for preclinical collaborations, and multi-modality imaging.



KEY INSTRUMENTATION

Bruker 9.4 Tesla MRI Scanner (small animal)

Equipped with cryo-coils (mouse and rat) and ASL coil (rat)

Mediso PET-SPECT-CT Scanner (small animal)

Can operate with single or four animal-bed, ideal for high throughput screening

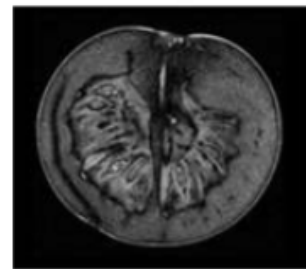
Magnetic Insights Magnetic Particle Imaging (MPI) scanner (small animal)

Integrated CT module allows the exact localisation of functional events. The HYPER module offers millimetre heating accuracy and real-time monitoring of the therapeutic heat dose.

ADDITIONAL PRECLINICAL FACILITIES

Onsite animal housing (for radiochemistry studies)

Radiochemistry HPLC



Linked Research Facilities

Monash Biomedical Imaging (MBI)

An integrated facility located at Clayton offering access to a suite of multimodal and simultaneous imaging for clinical and preclinical studies.

Access to Neuroimaging Facilities

ARA-MBI provides instrument access, operational support, development, and training to new and existing users. There are always opportunities for new collaborations with imaging and preclinical researchers.

Contact Details

Dr. Robert Brkljača

Facility Manager and Imaging Support Scientist

E: robert.brkljaca@monash.edu

P: + 61 3 9903 0971

Click [here](#) to visit our website



VBIC



A Victorian Science Agenda Strategic Project

