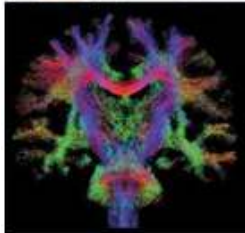


The Florey Institute of Neuroscience and Mental Health

Florey researchers are at the forefront of rapidly advancing interdisciplinary fields in a combined hospital and research setting. They develop and apply imaging techniques and approaches that are essential to advancing our understanding of the structure and function of the human nervous system and that of related animal models.



KEY INSTRUMENTATION

3 Tesla Human MRI Scanner

RESEARCH FACILITIES

Clinical Neuroscience

Epilepsy

Stroke

Brain injury

Neurophysiology (TMS and EEG-MRI)

MRI Technique Development

Diffusion-weighted MRI

Diffusion fibre tracking

Super-resolution Track Density Imaging

Perfusion MRI

fMRI functional connectivity

Simultaneous EEG and fMRI

Event related ICA



Access to Neuroimaging Facilities

The Florey encourages use of all imaging facilities by outside parties. The use of the facilities is offered at very competitive rates. Scanners can be accessed on a fee for service basis, or full scientific collaboration with Florey scientists is also possible when appropriate.

If you would like to enter into an imaging-related collaboration with Florey scientists, please address enquiries to Professor Graeme Jackson or Professor Alan Connelly.

Contact Details

Professor Graeme Jackson

Node Director

E: graeme.jackson@florey.edu.au

P: + 61 3 9035 7068

Click [here](#) to visit our website



A Victorian Science Agenda Strategic Project

